

PlaNexTrip
The Travel Company

It's time to **TRAVEL** *Pachmarhi*

Website

www.planextrip.com

BOOK NOW

 +91 9376775193  www.planextrip.com  @planextrip  @planextrip

Trip Overview

3 Days/2 Nights OR 2Days/1Night

AC Cab/Traveller with Driver

Departure City: Indore/Bhopal/Hoshangabad/Itarsi/Pipariya

Pachmarhi Tour Package , also known as the "Queen of Satpura", is a beautiful hill station located in Madhya Pradesh. This serene destination is famous for its lush greenery, waterfalls, ancient caves, and colonial charm. From Bhopal, it takes approximately 5-6 hours to reach Pachmarhi by road, making it a perfect weekend getaway.

Ideal For: Family, Couples, Friends, Nature Lovers





Itinerary Overview:

Day: 1 | Bhopal → Pachmarhi

- Departure from Bhopal
- Breakfast en route (at Pipariya or Matkuli) – at own cost
- 11:00 PM: Reach Pachmarhi & check-in at hotel
- 12:00 PM – 06:30 PM: Begin Mahadev Pati Darshan (All allowed temple points by traveller):
 - Jatashankar Mahadev
 - Pandav Caves
 - Bada Mahadev
 - Gupt Mahadev
 - Green Valley
 - Pachmarhi Lake
- 06:30 PM: Enjoy sunset at Rajendra Giri
- 08:00 PM: Return to hotel
- 08:30 PM: Dinner & overnight stay at hotel

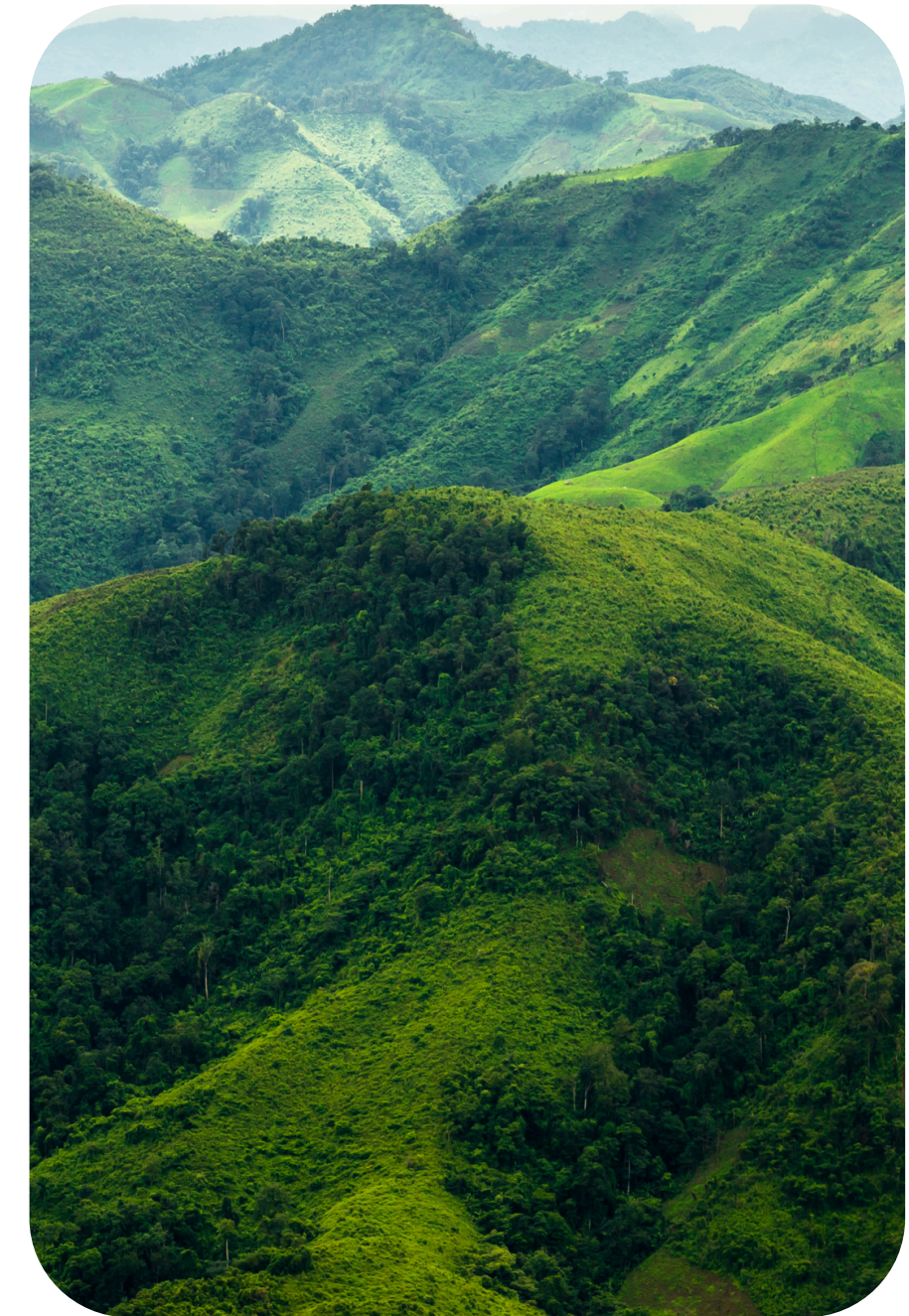
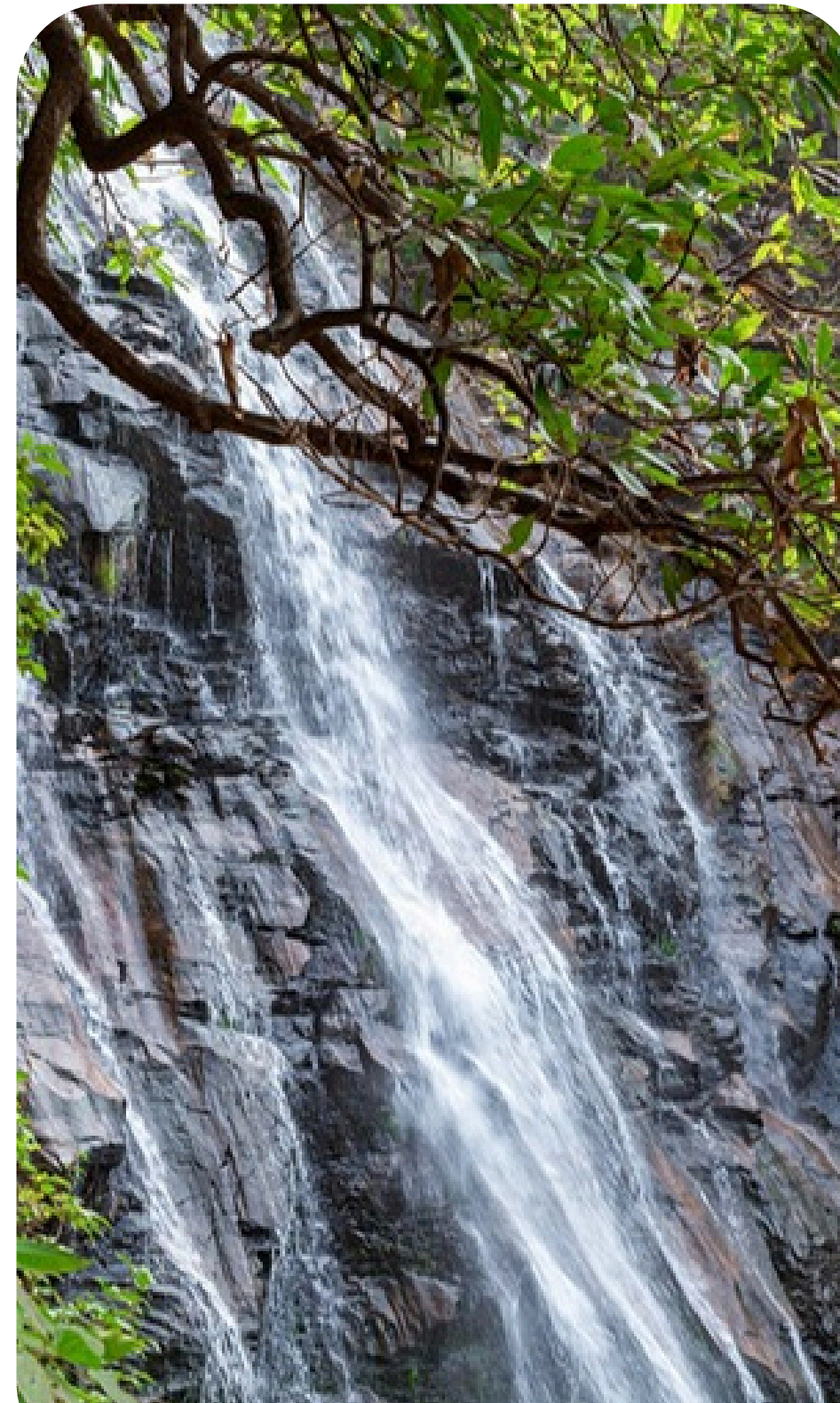
Itinerary Overview:

Day: 2 | Pachmarhi Sightseeing

- 08:00 AM: Breakfast at hotel
- 09:00 AM – 06:00 PM: Forest Jeep Safari covering all major points (Route:3)
- Museum
- Bee Fall
- Apsara Vihar
- Reechgarh Caves
- Echo Point
- Dhoopgarh Sunset Point (Highest Peak of MP)
- 07:00 PM: Return to hotel
- 08:30 PM: Dinner & overnight stay

For 2D/1N Package

- 6.00PM : Departure from Pachmarhi to Bhopal
- 12:00 PM: Reach Bhopal (approximate time)



Itinerary Overview:

Day: 3 | Pachmarhi → Bhopal (Optional Visit)

- 07:00 AM: Early morning wake-up and freshen up
- 08:30 AM: Breakfast & check-out
- 09:00 AM – 03:00 PM: Begin the trek to Chauragarh Mahadev Temple (Around 3.5 km trek one way – approx. 1300+ steps)
- 03:00 PM: Leisure time / local shopping or snacks
- 03:30 PM – 04:00 PM: Departure from Pachmarhi to Bhopal
- 09:00 PM: Reach Bhopal (approximate arrival time)



Inclusions

- AC Cab / Traveller from Bhopal to Bhopal
- Complimentary Breakfast/Dinner
- Jeep Safari Charges for forest points (limited to specific spots)
- All Toll Taxes, Parking Charges & Driver Allowance
- All Sightseeing as per Itinerary
- Sightseeing with a Licensed Local Guide
- 2 Nights Hotel Accommodation in Pachmarhi (Standard/Deluxe as per package)
- Experienced Driver & Fuel Charges

Exclusions

- Anything not mentioned in the "Inclusions"
- 5% GST
- Extra usage of vehicle beyond itinerary
- Any kind of adventure activity (like Parasailing, ZipLine , ATV Bike, boating, etc.)
- Personal Expenses (like tips, laundry, meals other than breakfast, etc.)
- Any Entry Fees at Tourist Points or Monuments

BOOK NOW

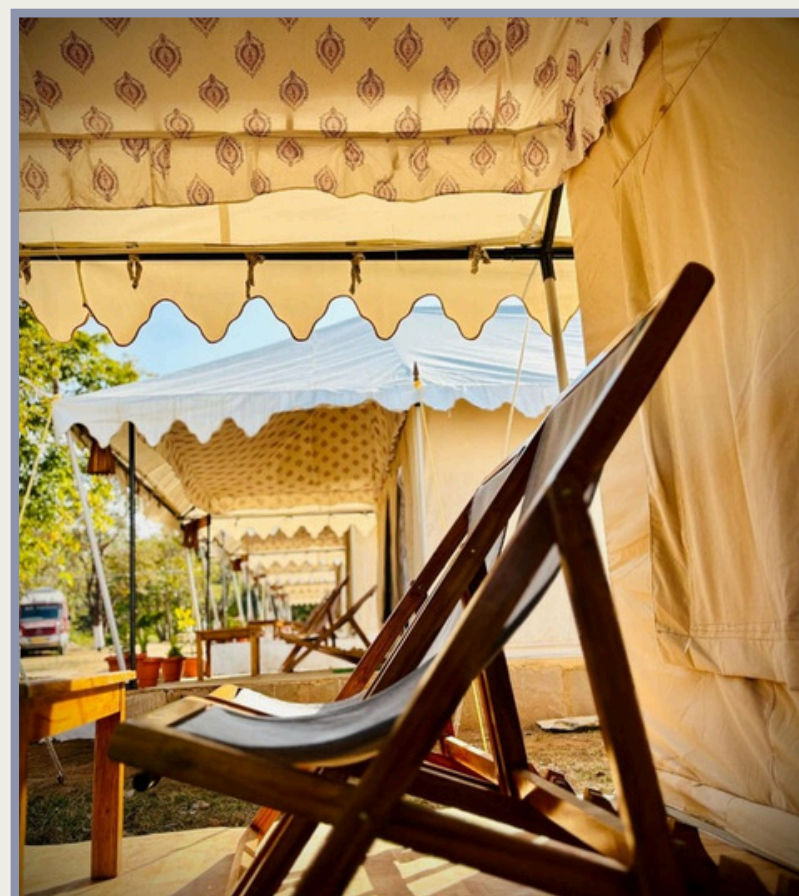




PlaNexTrip
The Travel Company7

Resort View Option:1

We provide you with a nature retreat stay with AC, hot and cold water, toiletries, and the best charming beautiful views where you make memories. Enjoy a low carbon footprint experience, personalized service, organic veggies and ingredients — all amidst the serenity of nature.





PlaNexTrip
The Travel Company7

Resort View Option:2

The Serene Woods Resort offers a tranquil retreat nestled among lush trees and rolling hills. Stay in cozy rooms designed to blend seamlessly with nature, savor delicious meals prepared from fresh ingredients, and soak up the outdoors under the warm sun. It's the perfect destination to relax, unwind, and reconnect with nature's quiet charm. Your peaceful escape—where comfort meets greenery and memories blossom—is just a click away.

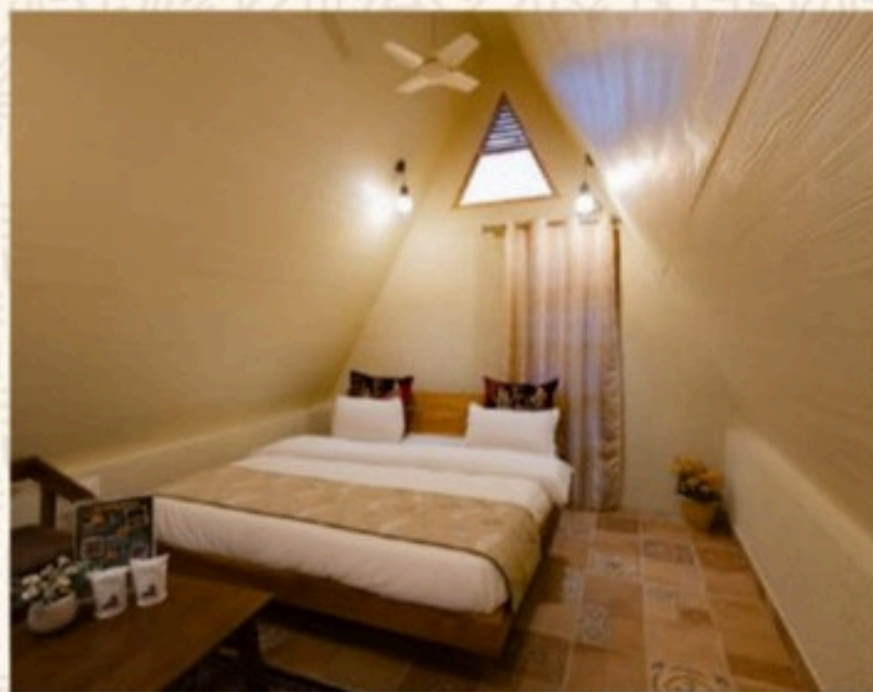
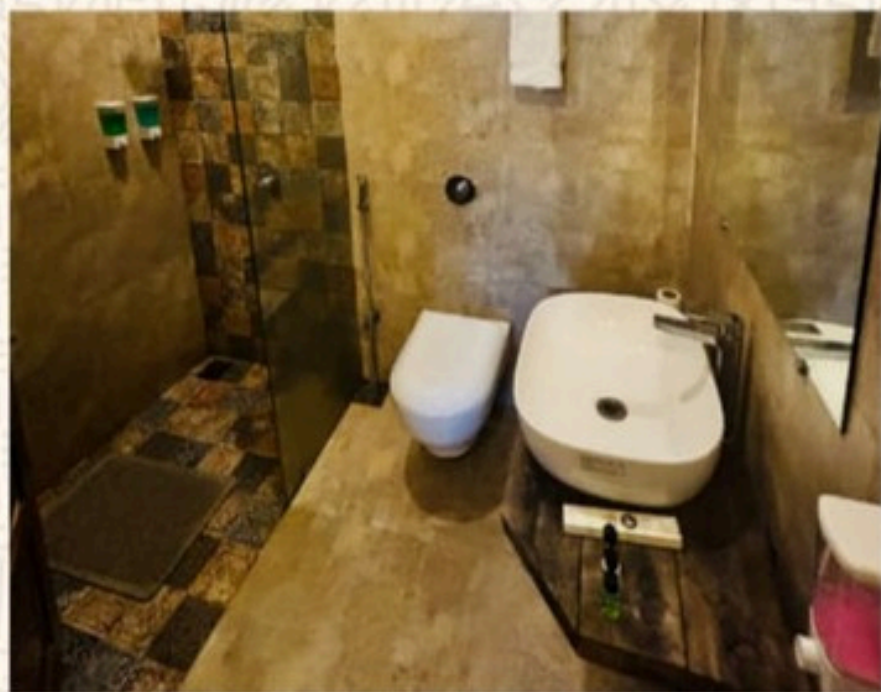




PlaNexTrip
The Travel Company7

Resort View Option:3

Tucked away in the peaceful tribal village of Bariaam, just 6 km from Pachmarhi, Jungle Ghar is where comfort meets wilderness. Spanning 10,000 sq. ft., this eco-friendly retreat provides an intimate and immersive escape, inviting you to experience nature at its purest.





PlaNexTrip
The Travel Company7

Hotel View Option:1

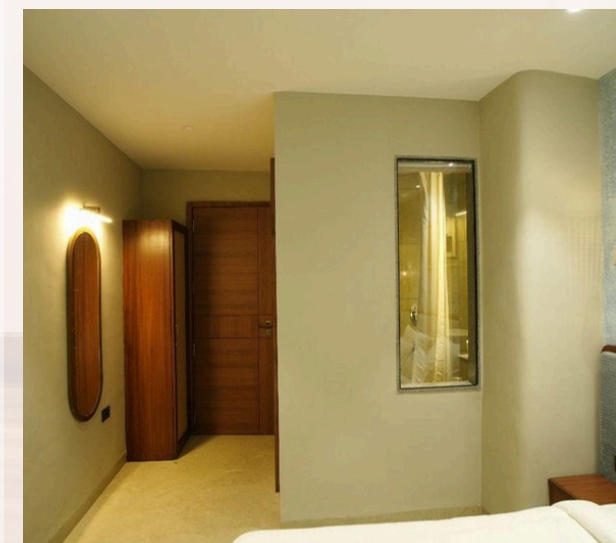
Nestled in the heart of the city, our hotel offers spacious rooms, modern amenities, and exceptional hospitality. Enjoy a refreshing pool, fine dining, and 24/7 service ensuring a seamless stay. Conveniently located near major attractions and transport hubs, it's the perfect retreat for relaxation or exploration. Experience true comfort and personalized care throughout your stay.



PlaNexTrip
The Travel Company7

Hotel View Option:2

Discover a blend of modern luxury and warm hospitality at our elegant hotel. Each room is designed for ultimate comfort with premium furnishings and city views. Guests can enjoy multi-cuisine dining, a serene spa, and quick access to local attractions.



Must Carry Items for Pachmarhi Trip

- Comfortable Shoes
- Weather-Appropriate Clothing
- Hat/Cap & Sunglasses
- Sunscreen & Moisturizer
- Water Bottle
- Personal Toiletries
- Personal Medication
- Power Bank/Charger
- Camera/Phone with Storage Space
- Tissues/Wet Wipes & Sanitizer
- Umbrella or Raincoat (Seasonal)
- Small Backpack/Day Bag

MUST
HAVE

BOOK NOW

Important Notes

- Itinerary & Timings: May change due to weather, roads, or local rules. Safety and comfort are always prioritized.
- Forest & Trek: Jeep Safari may be compulsory; forest entry can close without notice. Chauragarh trek (1300+ steps) is optional and for fit participants. Weak network in forest areas.
- Resort Rules: Swimming pool use as per property law. Bonfire/music nights depend on weather & hotel rules. Resort booking confirmed only after full payment. Any damage to property will be charged.
- Meals: Dinner on request only (extra charge).
- Travel: Vehicle breakdown may cause waiting; backup only for short distance. No liability for delays, closed points, or missed spots.
- Conduct: Dress modestly at religious sites. Smoking, alcohol, narcotics, weapons, fireworks, or banned items strictly prohibited. Misconduct may lead to eviction without refund.
- Stay: Extra mattress for additional guests. Valid Govt. ID compulsory. Outside visitors must be pre-informed.
- Safety: Management not responsible for injuries, theft, or personal loss. Eviction by hotel due to misbehavior is guest's responsibility.
- Refunds: Tickets/registrations once booked are non-refundable.
- Note: Keep the environment clean, respect others, and enjoy your trip!

BOOK NOW



PlaNexTrip
The Travel Company

See you at the Trip
**Pack Your
Bags Now!**



BOOK NOW

+91 9376775193  www.planextrip.com  [@planextrip](https://www.instagram.com/planextrip)